



## 5 COPPICE PALE BASINGSTOKE

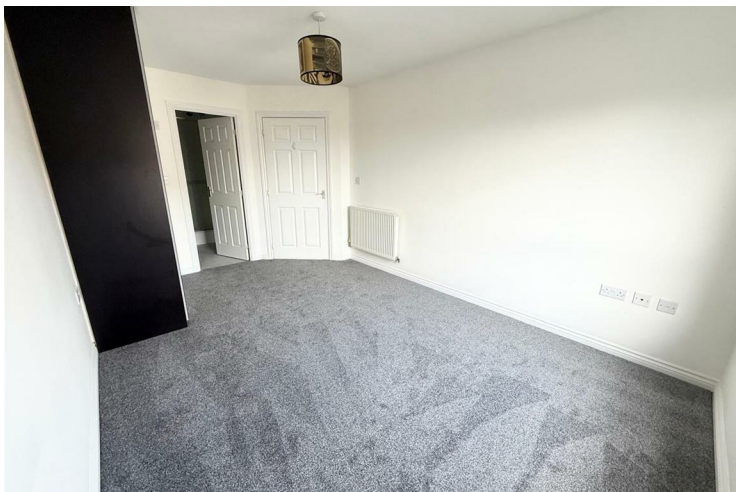
£1,250 Per

This flat at Coppice Pale, Chineham, Basingstoke, offers a perfect blend of comfort and convenience. With two well-proportioned bedrooms, one with a modern ensuite. This property is ideal for small families, couples, or individuals seeking a peaceful retreat. The flat features a spacious reception room, providing a welcoming space for relaxation and entertaining guests.

The property boasts a modern family bathroom, ensuring that both residents and visitors enjoy ample facilities. This thoughtful layout enhances the overall living experience, making it both practical and comfortable.

Additionally, the flat comes with allocated parking, a valuable asset in this bustling area, allowing for easy access and peace of mind.

Situated in a vibrant community, residents will benefit from nearby amenities, including shops, schools, and parks, all within a short distance. The excellent transport links in Basingstoke make commuting









Energy Efficiency Rating		
	Current	Potential
<i>Very energy efficient - lower running costs</i>		
(92 plus) <b>A</b>		
(81-91) <b>B</b>		
(69-80) <b>C</b>	80	81
(55-68) <b>D</b>		
(39-54) <b>E</b>		
(21-38) <b>F</b>		
(1-20) <b>G</b>		
<i>Not energy efficient - higher running costs</i>		
<b>England &amp; Wales</b>		EU Directive 2002/91/EC

**EPC Rating: C      Council Tax Band: C**

Agents Note: Whilst every care has been taken to prepare these particulars, they are for guidance purposes only. All measurements are approximate and are for general guidance purposes only and whilst every care has been taken to ensure their accuracy, they should not be relied upon and potential buyers/tenants are advised to recheck the measurements

Brockenhurst Lettings  
9 Tidworth Road  
Ludgershall  
SP11 9QD

01264 350434  
lettings@brockenhurst.info  
<https://brockenhurst.info/>

